

Version 1.0

insulaform
Insulated Concrete Forms

provided by



[PRODUCT BROCHURE]

www.insulabuildingsys.com

Background

The inventor of **insuliform** is a veteran of the construction industry, having worked on many residential and commercial projects for the last several decades. As ICF gained popularity in North America, he gained exposure to the available products and noted the subtle differences between them. He then set off to design a system that addressed the major shortcomings without compromising simplicity and usefulness.



For Builders, By Builders

Design Highlights

Our ICF solution went through rounds of product design and fine tuning – focusing on the attributes that tend to give installers and designers the most trouble at the job site.

1	Panel	The insuliform system consists of a single, reversible knock-down panel. Our interlocking design makes assembly strong and safe.
3	Components	Just three components are required for any job. Our standard panels, ties, and straps are all that you need, so ordering is quick and simple.
0	Embedded Plastic	We wanted insuliform to be lightweight and easy to store, carry, and cut. So we eliminated all embedded plastic from our EPS panels.
6" – 14"	Concrete Cores	Build concrete core thicknesses ranging from 6 to 14 inches by combining standard panels with the various tie width options available.
12"	Plastic Fastening Height	Our heavy duty ties span nearly the full height of each panel: just less than 12 inches. Combine this with perfect tie alignment for superior finishing.
0	Wood Strapping	The strength of our patented interlocking panel design, combined with insuliform ties and corner straps requires zero temporary wood strapping.
R22 – R55	R-Value	Each tie includes clips that not only hold rebar, but also secure additional panels in place to achieve higher R-Values: from R-22 to R-55.

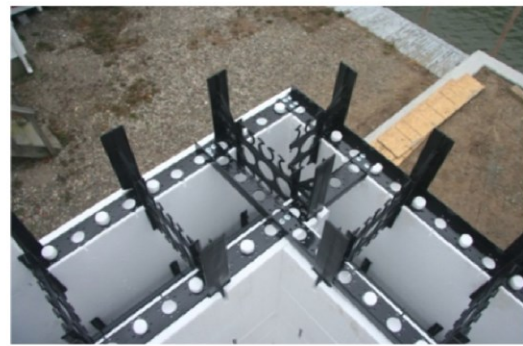
simplystronger
simplyfaster
simplygreener
simplyquality
simplytrustworthy
simplyuseful

simplystronger
simplyfaster
simplygreener
simplyquality
simplytrustworthy
simplyuseful

Product Brochure

Project Feature

Superstorm Sandy devastated the Northeast in 2012, leaving communities picking up the pieces of their homes and businesses. Studies have proven ICF to be especially resistant to extreme wind, storm surge, and debris. That is why Long Island ICF Construction (www.icfbuilders.us) chooses **insulabform** in their efforts to rebuild.



simplystronger
simplyfaster
simplygreener
simplyquality
simplytrustworthy
simplyuseful

simplystronger
simplyfaster
simplygreener
simplyquality
simplytrustworthy
simplyuseful

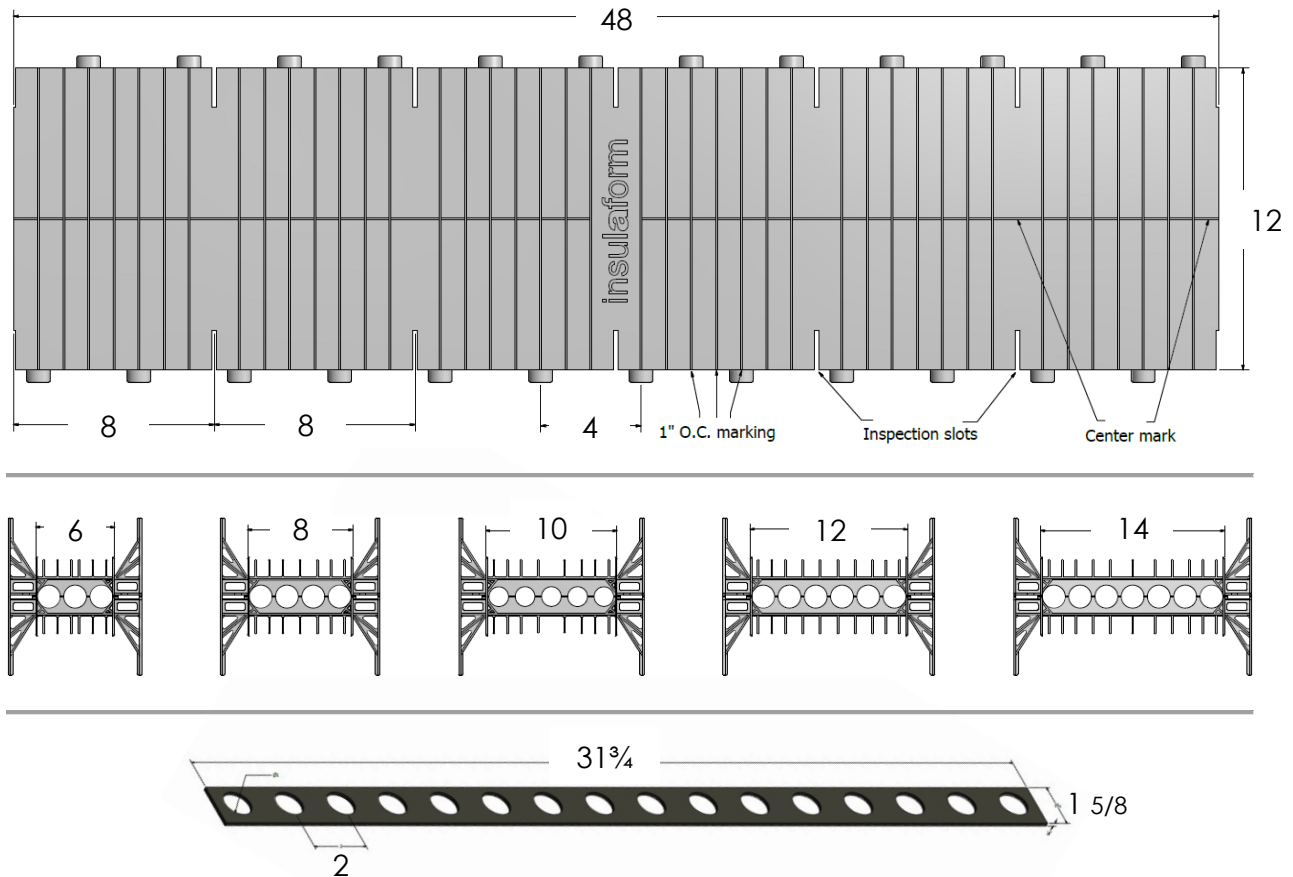
Product Brochure

Technical Specifications

Every major governing body in the United States and Canada has approved ICF for commercial and residential building, citing ASTM E2634. Code officials can refer to:

International Building Code (IBC)	Chapter 19	Concrete
	Chapter 26	Plastic
International Residential Code (IRC)	R404	Foundation and Retaining Walls
	R608	Exterior Concrete Wall Construction
United States Patent	US 8800218 B2	Insulating Construction Panels, Systems and Methods

Just 3 Simple Components



Contact Information

Web: www.insulabuildingsys.com

E: icf@insulabuildingsys.com

P: (631) 902-2992



"We strive to make construction simple and efficient for our customers by consistently offering high quality, versatile, and sustainable building systems."